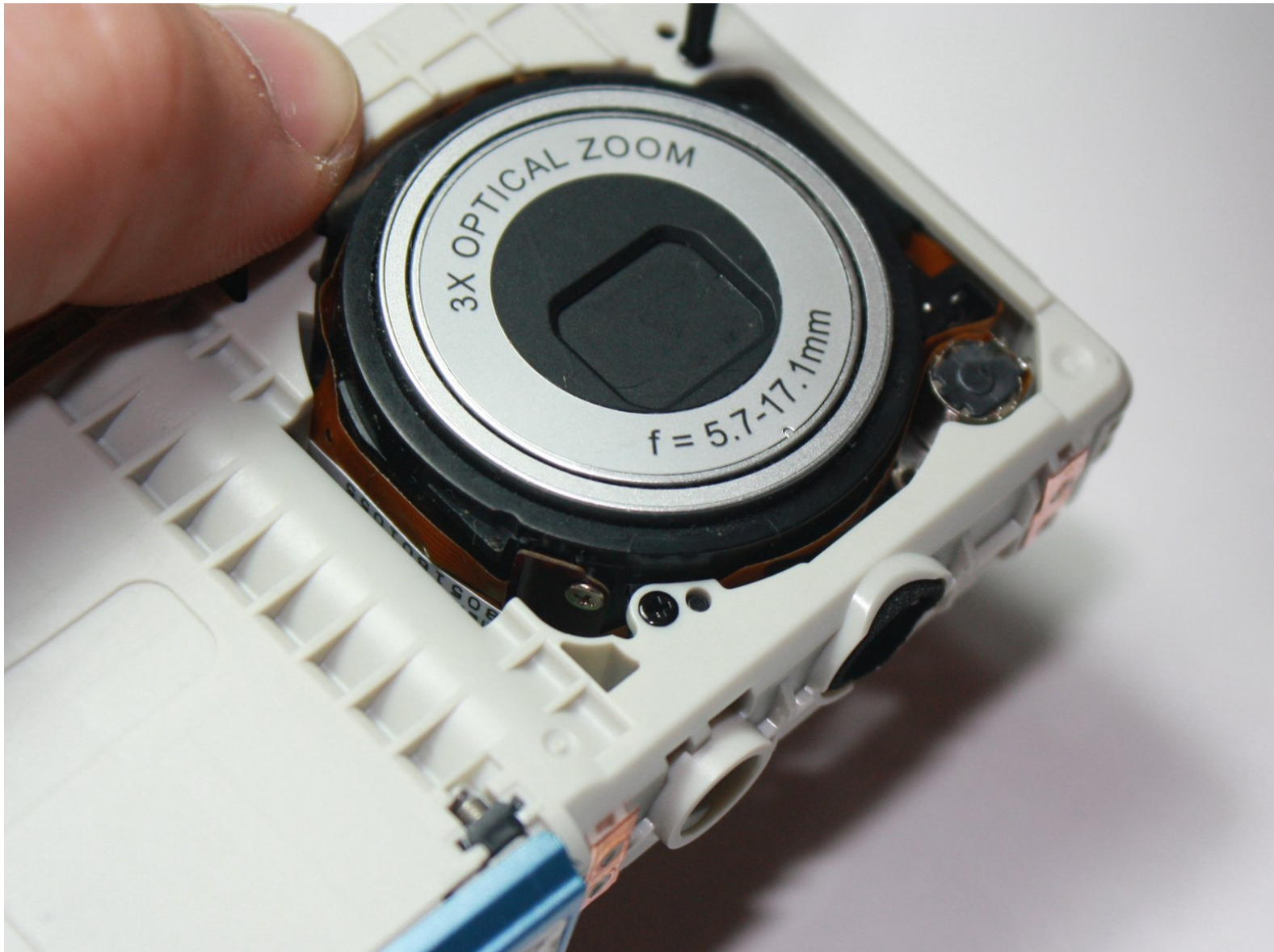




Sanyo VPC-T850 Lens Replacement

Written By: Jonathan Yau



INTRODUCTION

Steps on how to remove the lens. Removal of the LCD display and the outside case is required.



TOOLS:

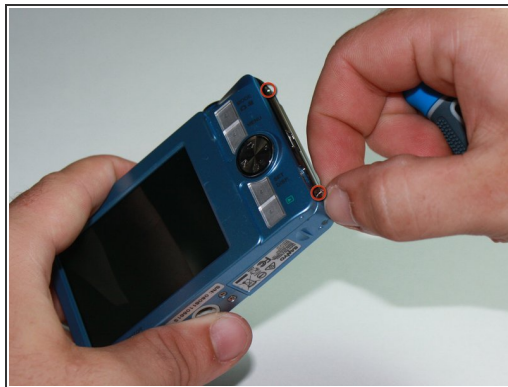
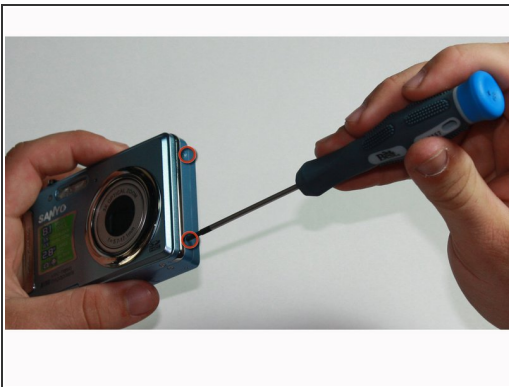
- [Phillips #00 Screwdriver](#) (1)
-

Step 1 — Disassembling Sanyo VPC-T850 Outer Casing



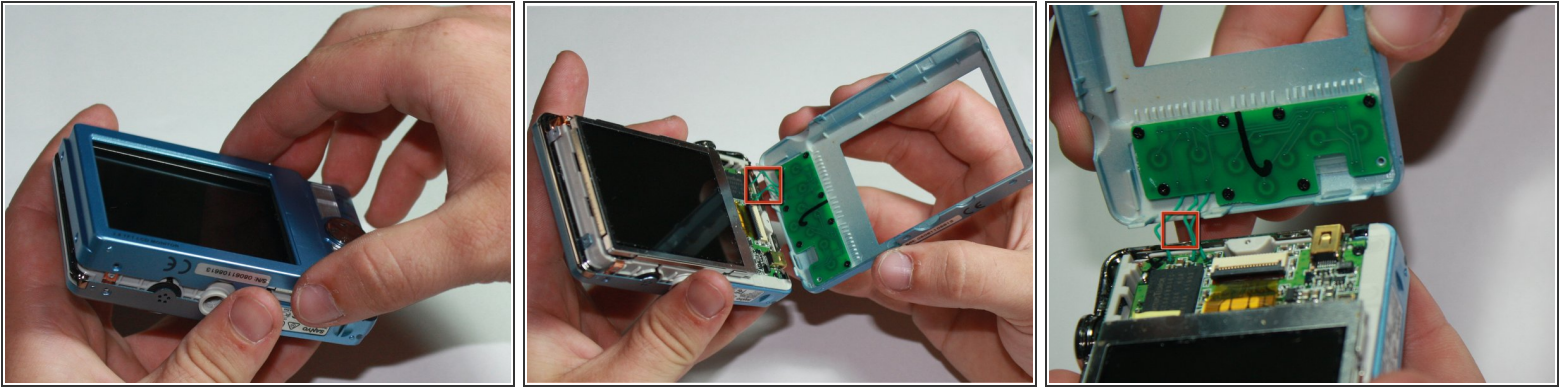
- Turn the camera off by pressing the small, square button embedded in the top rim of the camera.
 - Slide out and open the hatch located on the bottom-right side of the camera.
 - In the revealed compartment, move the small notch and push in on the battery to remove it.
- i** During reassembly, there is an arrow on the battery indicating which way it goes in.

Step 2 — Remove Screws




- Using the Phillips #00 Screwdriver, remove the 8 screws located around the sides and bottom of the camera.
- i** Look for the screwhead with the label PH00 on the side in the kit provided.
- ★** Be sure to save these screws in a secure area to ensure they are not lost.

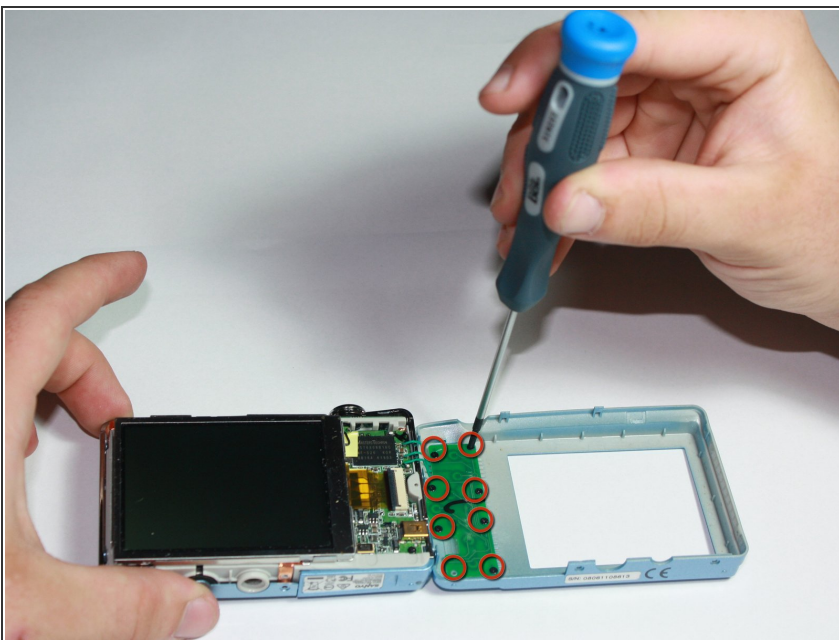
Step 3 — Remove Rear Panel




- Using the spudger, slowly pry the rear panel away from the left side.

 Be careful not to damage the three green cables as you remove the rear panel of the camera.

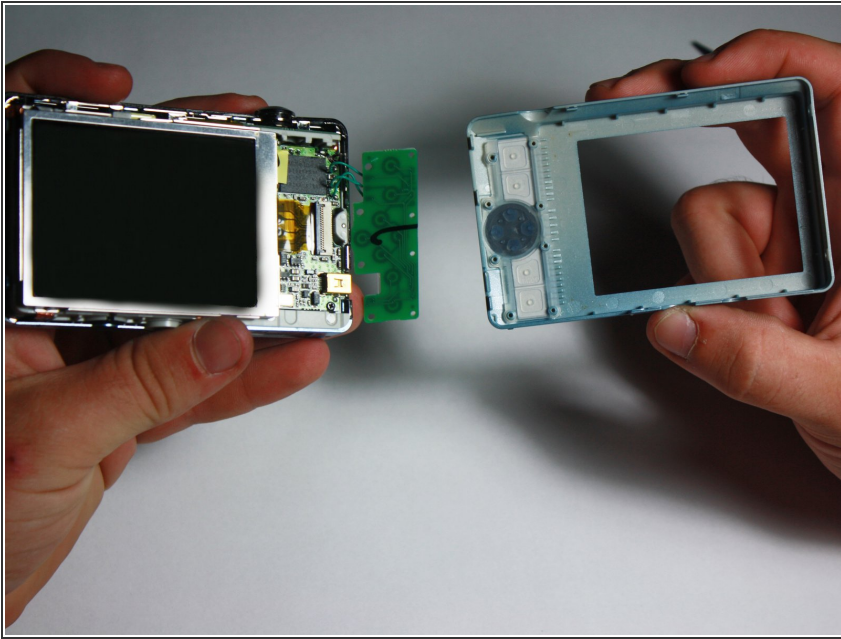
Step 4



- Using the Phillips #00 Screwdriver, remove the 8 black screws connecting the green keypad chip to the rear panel.

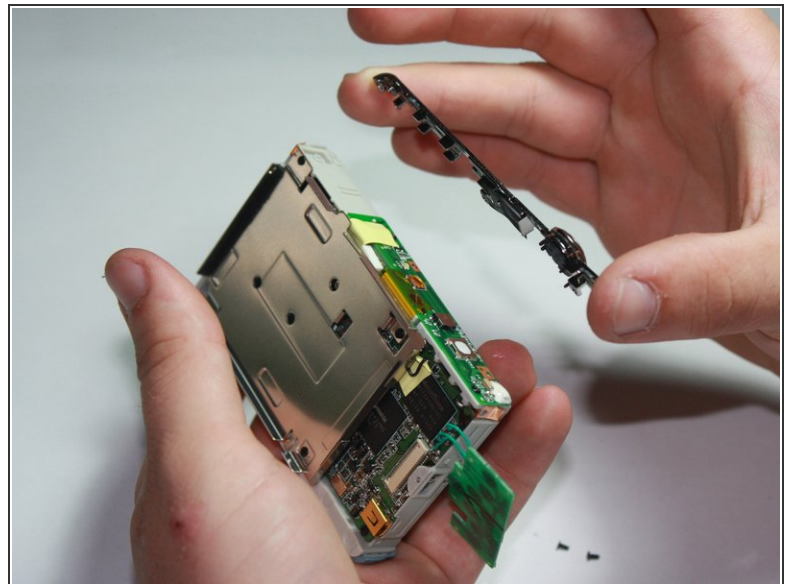
 Do not put any excessive force on the green wires.

Step 5



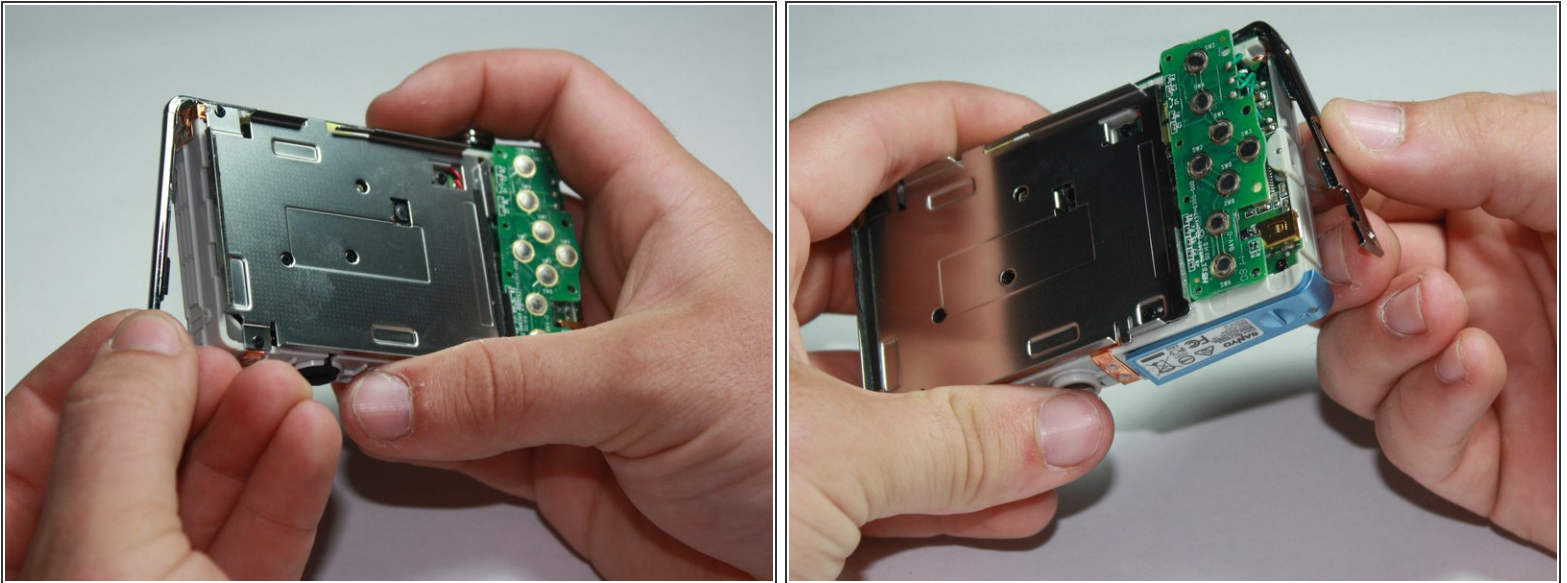
- Separate the rear panel from the rest of the camera assembly.

Step 6



- Using the Phillips #00 Screwdriver, remove the 3 screws located across the top of the camera.

Step 7



- Carefully pull off the side covers wrapped around the camera.

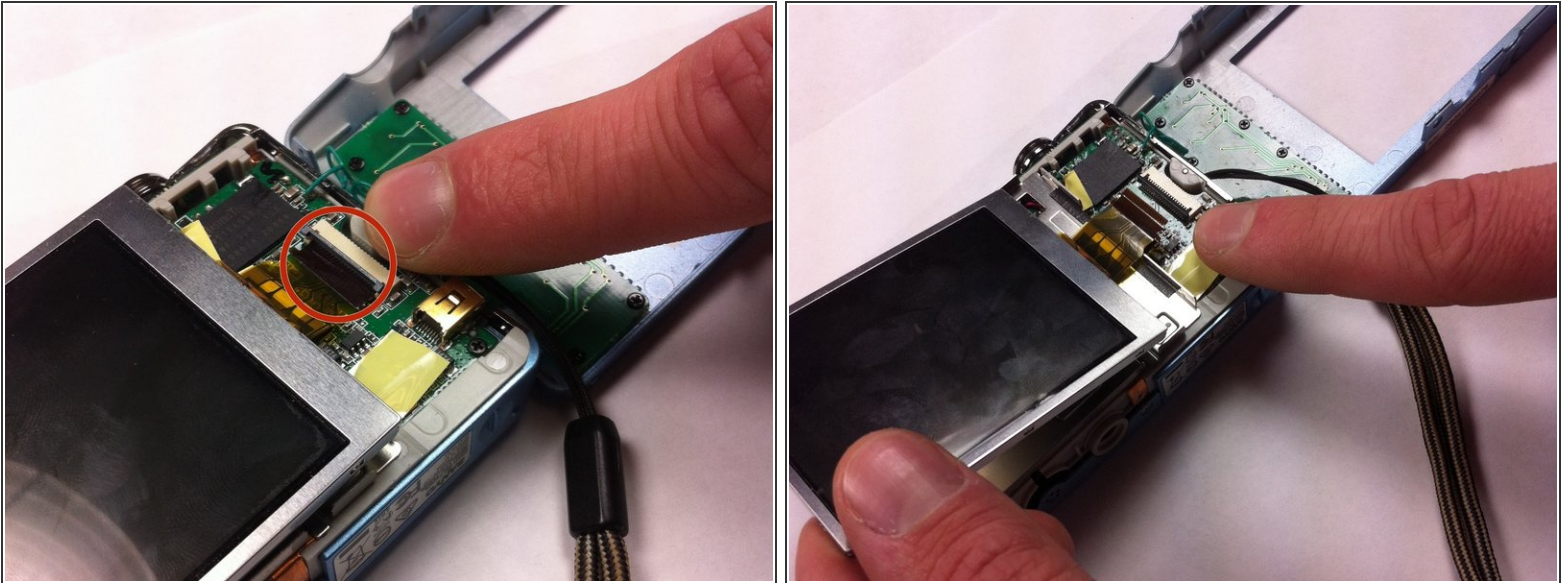
Step 8 — Remove Front Cover



- Using the spudger, gently pry the front cover of the camera off.

⚠ As the front cover is fragile, it can easily break if not removed carefully.

Step 9 — Disconnect the Ribbon



 Use caution not to damage ribbon when disconnecting.

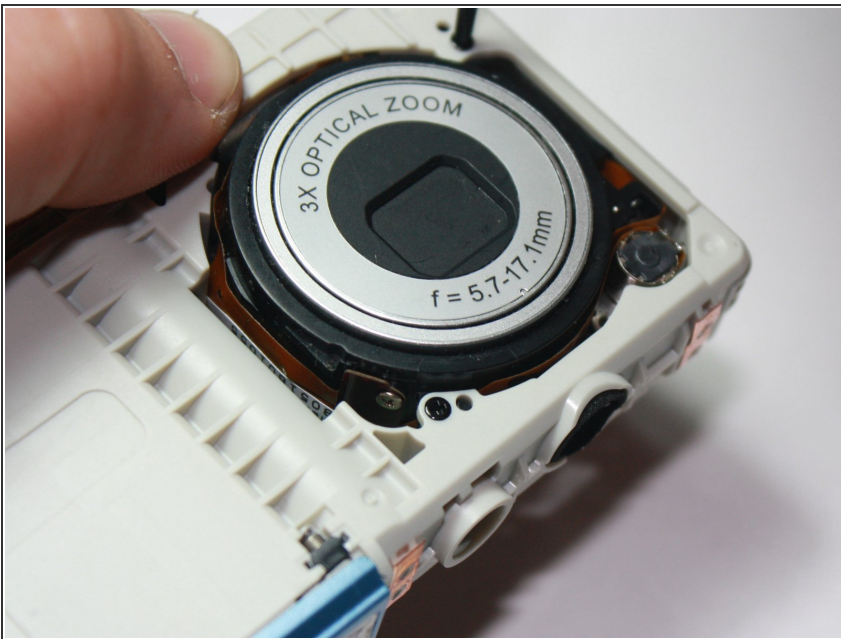
- The yellow ribbon is attached to the right side of the screen and goes to a black connector piece.
- Gently flip the black connector away from the LCD screen to unlock the yellow ribbon.
- Carefully pull the yellow ribbon towards the LCD screen to disconnect it.

Step 10 — Remove LCD Screen



- The LCD screen should now be disconnected from the rest of the camera and a pry tool can be used to lift it out of its casing.

Step 11 — Lens



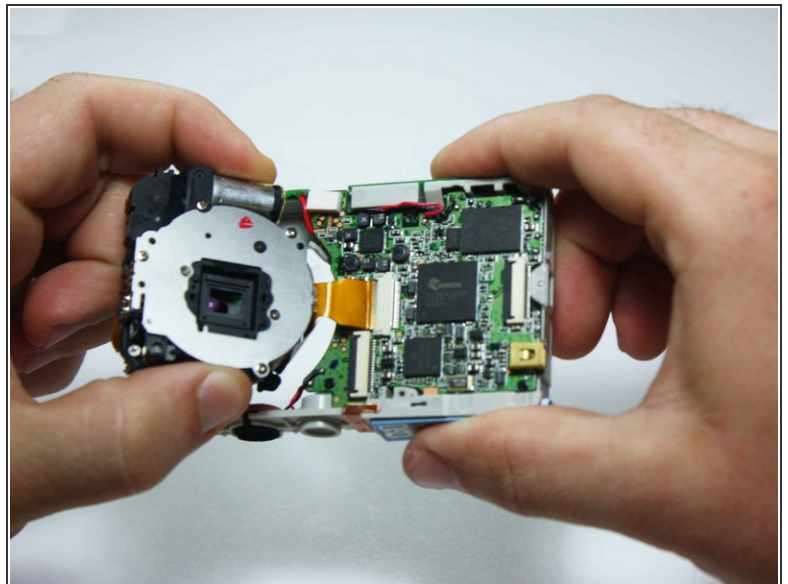
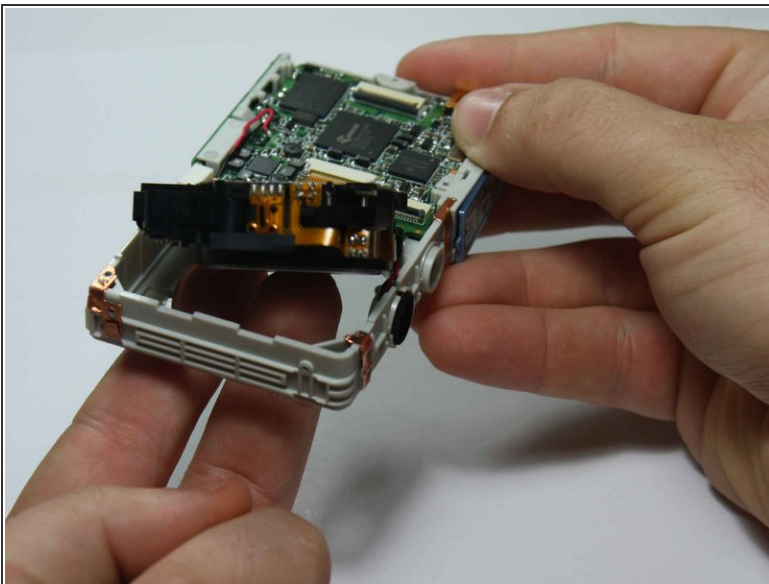
- Flip the camera over with the lens facing up.

Step 12



- Using the Phillips #00 Screwdriver, remove the two screws holding the lens in place.
- ☑ Use your other hand to hold the lens in place so the lens does not fall out while removing the screws.

Step 13

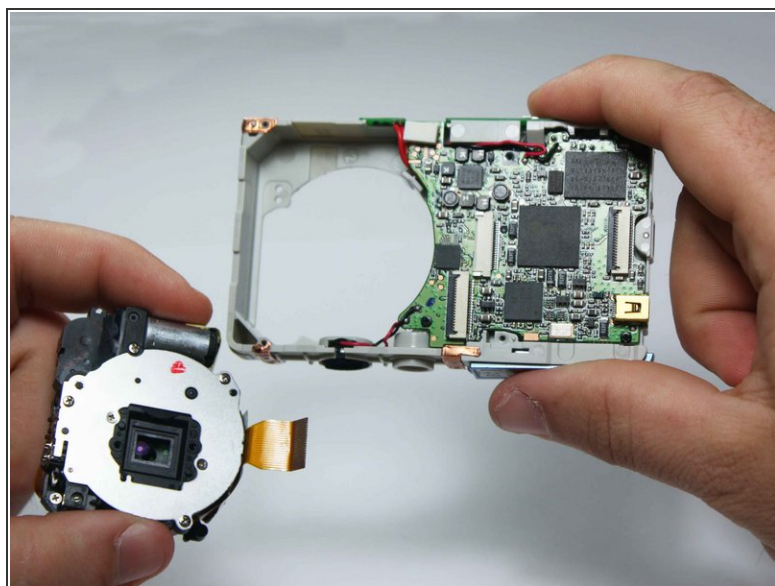
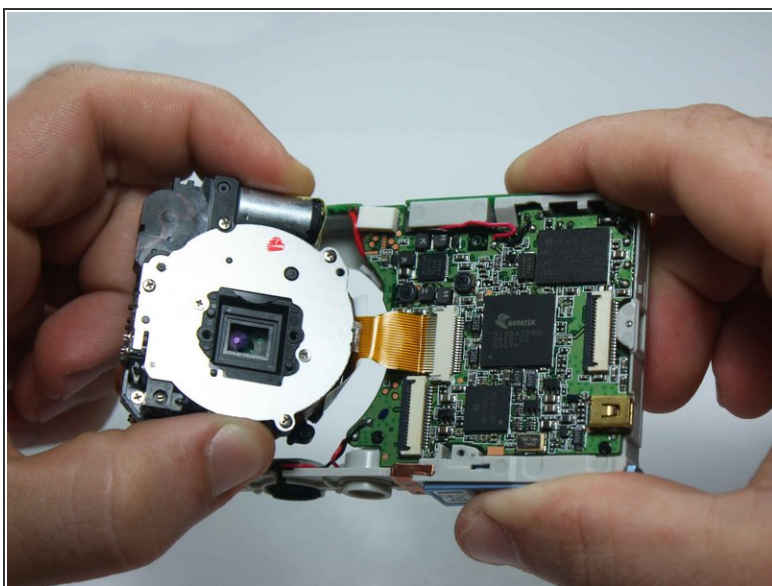


- While keeping hold of the lens, flip the entire assembly around.
- Using your fingers, gently push the lens out from its position in the casing.



There is still a flat, golden wire connecting the lens to the motherboard.

Step 14



- Carefully unplug the golden wire from the motherboard to remove the lens from the assembly.